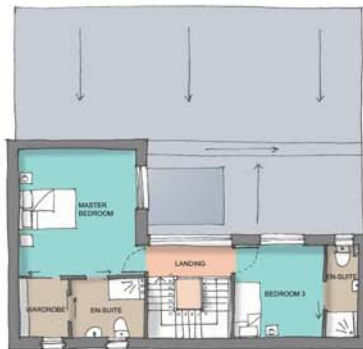


# About

ClosetMaid offers ventilated wire shelving and storage solutions for domestic use. With Fixed and Adjustable mounting hardware options, ClosetMaid shelving is economical, functional and extremely durable. The ventilated nature of the wire components promotes airflow, which can be crucial for some uses. With a variety of pre engineered options like wire diameter and density, ClosetMaid's wire systems can be specified for a variety of applications based on suitability and strength requirements. All ClosetMaid wire shelves are cold drawn, significantly improving the average tensile strength and performance characteristics of the steel. Made from 91% recycled content steel, with a durable vinyl coating, ClosetMaid has become a relied upon supplier for builders and homeowners alike.

## Case Studies - Potton, Passivhaus



Potton wanted to achieve a self build home which promoted sustainability, without compromise. They asked ClosetMaid to provide a solution for their walk in wardrobe space which would fit with their ethos. We designed a closet using the ClosetMaid ventilated shelving.



The result offered a spacious master wardrobe, with areas for folded, short hanging, and long hanging garments, as well as shoe storage and accessory storage. We utilised both Fixed mount and Adjustable hardware to provide the consumer with the flexibility where needed, and also to suit the construction of the walls, taking into account a pocketed area for the door.

# Case Studies

## Berkeley Homes - Highwood, Horsham



A new development of over 1000 homes with a selection of 1 & 2 bedroom apartments, retirement apartments, and 2, 3 & 4 bedroom homes. Berkeley Homes were looking for a quality solution to install into boiler & airing cupboards that would meet or exceed the expectations of a typical Berkeley Homes customer.



The final product needed to adapt from unit to unit. We utilised the Fixed mount hardware system with our ventilated wire shelving system. The ventilated shelving was perfect for boiler & airing cupboards, encouraging airflow and allowing homeowners to use the space as a drying area. The fixed mount hardware system allowed multiple fixing options to overcome various obstacles, such as pipe work, megaflo cylinders and pressure vessels.

## Fabrica by A2 Dominion - Viva, Stanwell



Working together with the local council, Fabrica created the Viva, Stanwell development as part of a regeneration scheme. Providing a mix of affordable rent, shared ownership and private sale homes, the development boasted over 500 residences varying from 1 bedroom apartments to three bedroom houses. Fabrica wanted a flexible and durable storage solution for linen cupboards.



ClosetMaid designed and worked with Fabrica to create a suitable solution for each dwelling type. Due to the nature of the application, the Adjustable mount hardware system was selected together with wire ventilated shelving. The system used a variety of different depth shelving to cope with the changes between cupboard sizes in each dwelling type. The result offered simple storage which had the option to be added to or adjusted to suit the needs of the occupant.